

**MATOBO CONSERVATION SOCIETY**  
**CHECKLIST FOR THE BUTTERFLIES OF THE MATOBO HILLS**



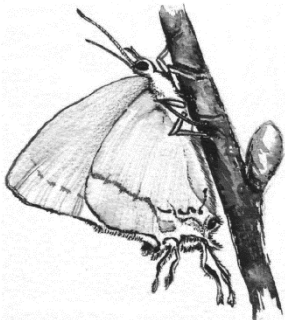
**APPRECIATION**

This material was prepared by the MATOBO CONSERVATION SOCIETY  
 from chapter 10 of the book  
**“THE NATURAL HISTORY OF THE MATOBO HILLS” ISBN 978-0-7974-9815-0**  
 with the approval of the  
 the NATURAL HISTORY MUSEUM OF ZIMBABWE

The Matobo Conservation Society, a registered Welfare organisation, is committed to the conservation, appreciation and sustainable use of the natural and cultural resources within the Matobo Hills region. For more information (a) on this checklist and (b) the book “THE NATURAL HISTORY OF THE MATOBO HILLS” , write to: The Matobo Conservation Society, PO Box FM 648, Famona, Bulawayo or email [matoboconservationsociety@gmail.com](mailto:matoboconservationsociety@gmail.com)

**INTRODUCTION**

Compiled by MW Gardiner & AJ Gardiner  
 Sketches were done by Jenny Whalley



The appearance of certain species can be very seasonal. Some of the scarcer butterflies only appear at the beginning of September with the start of the warmer weather, a few stragglers, usually tatty individuals, with frayed wings, continue until the third week of October. Other more common species then take over and there is a flush at the end of March which extends to the end of April. The checklist of Butterflies (Rhopalocera) shows known food plants of the caterpillars.

Scientific Name	Common Name	Food plants	Your Notes
<b>Nymphalidae</b>			
<b>Danainae</b>	<b>Monarchs</b>		
<i>Danaus chrysippus aegyptius</i>	African Monarch	<i>Asclepias fruticosa</i>	
<i>Amauris echeria lobengula</i>	The Chief	<i>Tylophora</i>	

**MATOBO CONSERVATION SOCIETY**  
**CHECKLIST FOR THE BUTTERFLIES OF THE MATOBO HILLS**

Scientific Name	Common Name	Food plants	Your Notes
<b>Satyrinae</b>	<b>Browns or Ringlets</b>		
<i>Melanitis leda helena</i>	Common Evening Brown		
<i>Heteropsis simonsii</i>	Pale Bush Brown	<i>Panicum maximum</i>	
<i>H. perspicua</i>	Marsh Patroller		
<i>Bicyclus ena</i>	Grizzled Bush Brown		
<i>B. anynana</i>	Squinting Bush Brown		
<i>Physcaeneura panda</i>	Dark Webbed Ringlet		
<i>Neita extensa</i>	Savanna Brown		
<i>Ypthima impura</i>	Bushveld Ringlet		
<i>Y. granulosa</i>	Granular Ringlet		
<i>Y. asterope</i>	African Ringlet		
<i>Y. antennata antennata</i>	Clubbed Ringlet		
<i>Mashuna mashuna</i>	Mashuna Ringlet	<i>Cynodon dactylon</i>	
<b>Acraeinae</b>	<b>Reds and Acraeas</b>		
<i>Acraea neobule neobule</i>	Wandering donkey Acraea		
<i>A. machequena</i>	Machaquena Acraea		
<i>A. natalica natalica</i>	Natal Acraea	<i>Passifora coerulea, Adenia gummifera</i>	
<i>A. caldarena caldarena</i>	Black tipped Acraea	<i>Tricliceras longependunculatum</i>	
<i>A. lygus</i>	Lygus Acraea		
<i>A. oncaea</i>	Window Acraea	<i>Adenia</i>	
<i>A. axina</i>	Little Acraea		
<i>A. aglaonice</i>	Clear spotted Acraea	<i>Passiflora edulis</i>	
<i>A. acara acara</i>	Acara Acraea	<i>Passiflora edulis</i>	
<i>A. anemosa</i>	Broad-bordered Acraea		
<i>A. encedon encedon</i>	White-barred Acraea	<i>Commelina sp</i>	
<i>A. induna</i>	Induna Acraea		
<i>A. burni</i>	Pale-yellow Acraea	<i>Obetia tenax</i>	
<i>Hyalites eponina</i>	Dancing Acraea	<i>Triumfetta rhomboidea, T. annua</i>	
<i>H. rahira rahira</i>	Marsh Acraea		
<i>Pardopsis punctatissima</i>	Polka Dot		
<b>Charaxinae</b>	<b>Swifts or Charaxes</b>		
<i>Charaxes varanes</i>	Pearl Charaxes	<i>Allophylus sp</i>	
<i>C. candiope candiope</i>	Green-veined Charaxes	<i>Croton gratissimus</i>	
<i>C. jasius saturnus</i>	Foxy or Koppie Charaxes	<i>Afzelia quanzensis, Colophospermum mopane, Kirkia acuminata</i>	
<i>C. brutus natalensis</i>	White-barred Charaxes	<i>Trichilia emetica, Kirkia acuminata</i>	

**MATOBO CONSERVATION SOCIETY**  
**CHECKLIST FOR THE BUTTERFLIES OF THE MATOBO HILLS**

Scientific Name	Common Name	Food plants	Your Notes
<i>C. bohemani</i>	Large blue Charaxes	<i>Afzelia quanzensis</i>	
<i>C. zoolina zoolina</i>	Club-tailed Charaxes	<i>C. zoolina zoolina</i>	
<i>C. jahlusa rex</i>	Pearl-spotted Charaxes	<i>Pappea capensis, Dalbergia melanoxylon</i>	
<i>C. penricei penricei</i>	Scarce Savanna Charaxes	<i>Securidaca longepedunculata</i>	
<i>C. guderiana guderiana</i>	Blue-spangled Charaxes	<i>Brachystegia sp</i>	
<i>C. achaemenes achaemenes</i>	Bushveld Charaxes	<i>Pterocarpus rotundifolius</i>	
<i>C. baumanni selousi</i>	Little Charaxes	<i>Pterolobium stellatum</i>	
<i>C. phaeus</i>	Dusky or Demon Charaxes	<i>Senegalia nigrescens</i>	
<i>C. vansoni</i>	Van Son's Chraxes	<i>Peltophorum africanum</i>	
<i>C. manica</i>	Manica Charaxes	<i>Albizia antunesiana</i>	
<b>Nymphalinae</b>	<b>Brush-footed Butterflies</b>		
<i>Hamanumida daedalus</i>	Guineafowl	<i>Terminalia sericea, Combretum</i>	
<i>Pseudacraea boisduvali trimenii</i>	Boisduval's False Acraea		
<i>Neptis saclava marpessa</i>	Small Spotted Sailer	<i>Ricinus communis</i>	
<i>N. goochii</i>	Streaked Sailer	<i>Acalypa</i>	
<i>N. laeta</i>	Common Sailer		
<i>Sallya boisduvali boisduvali</i>	Boisduval's Tree nymph		
<i>Byblia anvatara acheloia</i>	Common Joker		
<i>B. ilithyia</i>	Spotted Joker		
<i>Eurytela dryope angulata</i>	Golden Piper		
<i>Hypolimnas misippus</i>	Common Diadem	<i>Portulaca foliosa</i>	
<i>Protogoniomorpha anacardii</i>	Clouded Mother-of-Pearl		
<i>Catacroptera cloanthe cloanthe</i>	Pirate		
<i>Precis octavia sesamus</i>	Gaudy Commodore	<i>Plectranthus sp</i>	
<i>P. antilope</i>	Darker Commodore		
<i>P. cuama</i>	Paler Commodore		
<i>P. ceryne ceryne</i>	Marsh Commodore		
<i>P. archesia</i>	Garden Commodore	<i>Plectranthus sp</i>	
<i>Junoia oenone oenone</i>	Blue Pansy		
<i>J. hierta cebrene</i>	Yellow Pansy		
<i>P. orithya madagascariensis</i>	Eyed Pansy	<i>Plectranthus sp</i>	
<i>Vanessa cardui</i>	Painted Lady		
<i>Phalanta phalantha</i>	African Leopard		
<i>P. eurytis eurytis</i>	Forest Leopard		
<b>Lycaenidae</b>	<b>Blues, Coppers and Hairtails</b>		
<b>Lipteninae</b>			
<i>Alaena amazoula ochroma</i>	Yellow Zulu	Lichen on rocks	
<i>A. nyassa nyassa</i>	Pied Zulu	Lichen on rocks	

**MATOBO CONSERVATION SOCIETY**  
**CHECKLIST FOR THE BUTTERFLIES OF THE MATOBO HILLS**

Scientific Name	Common Name	Food plants	Your Notes
<i>Mimacraea marshalli marshalli</i>	Marshall's Acraea Mimic	Lichen on tree trunks	
<i>Baliochila singularis</i>	Lannin's Buff	Lichen on trees	
<i>Cnodontes pallida</i>	Pale Buff		
<b>Miletinae</b>			
<i>Lachnocnema bibulus</i>	Common Woolly Legs	Psyllids (Homptera) in early life	
<b>Theclinae</b>			
<i>Stugeta bowkeri tearei</i>	Bowker's Sapphire	<i>Ximenia caffra</i>	
<i>Iolais silarus silarus</i>	Straight-line Sapphire		
<i>I. trimeni</i>	Trimen's Sapphire		
<i>I. pallene</i>	Saffron Sapphire	<i>Ximenia caffra</i>	
<i>I. australis</i>	Eastern Sapphire		
<i>I. mimosae rhodosense</i>	Mimosa Sapphire		
<i>I. nasisii</i>	Yellow-banded Sapphire		
<i>I. alienus alienus</i>	Brown-line Sapphire		
<i>Hypolycaena caeculus caeculus</i>	Azure Hairstreak	<i>Olax sp</i>	
<i>H. philippus philippus</i>	Purple-brown Hairstreak	<i>Ximenia caffra</i>	
<i>Leptomyrina henningi</i>	Henning's Black-eye		
<i>L. gorgias gorgias</i>	Common Black-eye	<i>Kalanchoe sp, Cotyledon sp</i>	
<i>Capys connexivus</i>	African Protea Butterfly		
<i>Deudorix lorisona coffea</i>	Coffee Playboy		
<i>D. dinochares</i>	Apricot Playboy	<i>Combretum zeyleri, Burkea africana</i>	
<i>D. antalus</i>	Brown Playboy		
<i>Myrina silenus ficedula</i>	Common Fig-tree Blue	<i>Ficus sp</i>	
<i>M. dermaptera dermaptera</i>	Lesser Fig-tree Blue	<i>Ficus sp</i>	
<i>Aphnaeus rex gardineri</i>	Eriksson's Highflier	<i>Burkea africana</i>	
<i>Cigaritis natalensis</i>	Natal Bar	<i>Ximenia caffra</i>	
<i>C. phanes</i>	Silvery Bar	<i>Ximenia caffra</i>	
<i>C. ella</i>	Ella's Bar	<i>Ximenia caffra</i>	
<i>Chloroselas pseudozeritis</i>	Brilliant Gem	<i>Julbernardia globiflora</i>	
<i>C. mazoensis</i>	Purple Gem		
<i>Axiocerses tjoane</i>	Common Scarlet	<i>Peltophorum africanum, Senegalia &amp; Vachellia sp</i>	
<i>A. amanga</i>	Bush Scarlet	<i>Ximenia americana</i>	
<i>Aloeides taikosama</i>	Dusky Copper		
<i>A. damarensis mashona</i>	Damara Copper		
<i>Crudaria leroma</i>	Silver-spotted Grey	<i>Senegalia &amp; Vachellia sp</i>	
<b>Polyommatainae</b>			
<i>Anthene definita</i>	Common Hairtail	<i>Allophylus africanus</i>	
<i>A. amarah amarah</i>	Black-striped Hairtail	<i>Senegalia &amp; Vachellia sp</i>	
<i>A. butleri</i>	Pale Hairtail		
<i>A. princeps princeps</i>	Cupreous Hairtail		

# MATOBO CONSERVATION SOCIETY

## CHECKLIST FOR THE BUTTERFLIES OF THE MATOBO HILLS

Scientific Name	Common Name	Food plants	Your Notes
<i>A. otacilia</i>	Otacilia Hairtail	<i>Senegalia &amp; Vachellia sp</i>	
<i>Uranothauma poggei</i>	Striped Heart		
<i>Cacyreus lingeus</i>	Bush Bronze		
<i>C. virilis</i>	Mocker Bronze or Blue		
<i>C. marshalli</i>	Geranium Bronze		
<i>Zintha hintza</i>	Hintza Blue	<i>Zizyphus sp</i>	
<i>Tuxentius calice calice</i>	White Pie	<i>Zizyphus sp</i>	
<i>T. melaena melaena</i>	Black Pie	<i>Zizyphus sp</i>	
<i>Leptotes pirithous</i>	Common Zebra Blue	<i>Burkea africana, Mundulea sericea</i>	
<i>L. brevidentatus</i>	Short-toothed Blue		
<i>Lampides boeticus</i>	Long-tailed Blue	many leguminous plants	
<i>Tarucus sybaris sybaris</i>	Dotted Blue	<i>Zizyphus sp</i>	
<i>Oraidium barberae</i>	Dwarf Blue		
<i>Azanus ubaldus</i>	Velvet-spotted Blue	<i>Senegalia &amp; Vachellia sp</i>	
<i>A. jesous</i>	Topaz-spotted Blue	<i>Senegalia &amp; Vachellia sp</i>	
<i>A. moriqua</i>	Thorn-tree Blue	<i>Senegalia &amp; Vachellia sp</i>	
<i>A. mirza</i>	Mirza Blue	<i>Senegalia &amp; Vachellia sp</i>	
<i>Chilades trochylus</i>	Grass Jewel		
<i>Zizula hylax</i>	Gaika Blue		
<i>Pseudonacaduba sichela</i>	Dusky Blue		
<i>Lepidochrysops letsea</i>	Free State Blue		
<i>L. mashuna</i>	Mashuna blue		
<i>L. peculiaris</i>	Peculiar Blue		
<i>L. glauca</i>	Silvery Blue		
<i>L. plebeja</i>	Twinspot Blue		
<i>L. vansoni</i>	Van Son's Blue	<i>Lantana sp</i>	
<i>Cupidopsis iobates iobates</i>	Tailed Meadow Blue		
<i>Actizera lucida</i>	Rayed Blue	<i>Oxalis corniculata</i>	
<i>Zizeeria knysna</i>	Sooty Blue	<i>Euphorbia sp</i>	
<i>Zizina antanossa</i>	Clover Blue	<i>Indigofera sp</i>	
<b>Pieridae</b>	<b>Whites</b>		
<b>Pierinae</b>			
<i>Pinacopteryx eriphia eriphia</i>	Zebra White		
<i>Colias electo electo</i>	African Clouded Yellow		
<i>Catopsilis florella</i>	African Migrant	<i>Cassia sp</i>	
<i>Eurema hecabe solifera</i>	Common Grass Yellow		
<i>E. brigatta</i>	Small Grass Yellow		
<i>E. desjardinsii</i>	Angled Grass Yellow	<i>Cassia sp</i>	
<i>Colotis vesta</i>	Veined Orange	<i>Maerua angolensis</i>	
<i>C. celimene amina</i>	Lilac Tip		
<i>C. ione</i>	Bushveld Purple Tip		
<i>C. danae</i>	Scarlet Tip	<i>Maerua angolensis</i>	

**MATOBO CONSERVATION SOCIETY**  
**CHECKLIST FOR THE BUTTERFLIES OF THE MATOBO HILLS**

Scientific Name	Common Name	Food plants	Your Notes
<i>C. auxo auxo</i>	Sulphur Orange Tip		
<i>C. antiveppe gavisa</i>	Red Tip	<i>Maerua</i>	
<i>C. evenina evenina</i>	Common Orange Tip		
<i>C. evippe omphale</i>	Smoky Orange Tip		
<i>C. pallene</i>	Bushveld Orange Tip		
<i>C. evagore antigone</i>	Small Orange Tip		
<i>C. eris eris</i>	Banded Gold tip		
<i>C. subfasciatus</i>	Lemon Traveller		
<i>Belenois aurota</i>	Brown-veined White	<i>Maerua</i>	
<i>B. creona severina</i>	African Common White	<i>Maerua</i>	
<i>Mylothris agathina</i>	Common Dotted Border	<i>Tapinanthus sp</i>	
<i>Mylothris rueppellii naemus</i>	Twin Dotted Border		
<b>PAPILIONIDAE</b>	<b>Swallowtails</b>		
Papilioninae			
<i>Papilio dardanus</i>	Mocker Swallowtail	<i>Citrus sp</i>	
<i>P. constantinus constantinus</i>	Constantine's Swallowtail	<i>Vepris reflexa</i>	
<i>P. demodocus demodocus</i>	Citrus Swallowtail		
<i>P. nireus lyaeus</i>	Green-banded Swallowtail		
<i>Graphium angolanus angolanus</i>	Angola White-lady Swallowtail		
<i>G. leonidas leonidas</i>	Veined Swordtail		
<i>G. antheus</i>	Large striped Swordtail		
<i>G. porthaon porthaon</i>	Cream-striped Swordtail		
<b>HESPERIIDAE</b>	<b>Skippers</b>		
<i>Coeliades forestan forestan</i>	Striped Policeman	<i>Combretum</i>	
<i>C. pisistratus</i>	Two-pip Policeman		
<i>Tagiades flesus</i>	Clouded Flat		
<i>Calleagris jamesoni jamesoni</i>	Jameson's Skipper		
<i>Eretis umbra</i>	Small Marbled Elf		
<i>Sarangesa lucidella lucidella</i>	Lucidella Elfin		
<i>S. phidyle</i>	Small Elfin		
<i>S. seineri seineri</i>	Dark Elfin		
<i>S. motozi</i>	Forest Elfin		
<i>Caprona pillaana</i>	Ragged Skipper	<i>Dombeya rotundifolia</i>	
<i>Leucochitonea levubu</i>	White-cloaked Skipper		
<i>Abantis tettenis</i>	Spotted Velvet Skipper	<i>Grewia flava</i>	
<i>A. paradisea</i>	Paradise Skipper		
<i>A. venosa venosa</i>	Veined Skipper		
<i>Spialia delagoae</i>	Delagoa Grizzled Skipper		
<i>S. secessus</i>	Wolkberg Skipper		
<i>S. dromus</i>	Large grizzled Skipper		
<i>S. diomus</i>	Common Sandman	<i>Hermannia sp.</i>	

**MATOBO CONSERVATION SOCIETY**  
**CHECKLIST FOR THE BUTTERFLIES OF THE MATOBO HILLS**

Scientific Name	Common Name	Food plants	Your Notes
<i>S. spio</i>	Mountain Sandman	<i>Hibiscus aethiopicus</i>	
<i>S. mafa mafa</i>	Mafa Sandman		
<i>Gomalia elma</i>	Green-marbled Sandman		
<b>Hesperiinae</b>			
<i>Metisella willemi</i>	Netted Sylph		
<i>Tsitana tsita</i>	Dismal Sylph		
<i>Kedestes marshalli</i>	Marshall's Ranger		
<i>K. callicles</i>	Pale Ranger		
<i>Teniorhinus harona</i>	Arrowhead Orange		
<i>Acada biseriatas</i>	Axehead Orange		
<i>Parosmodes morantii morantii</i>	Morant's Orange		
<i>Acleros mackenii</i>	Macken's Dart		
<i>Andronymus neander neander</i>	Nomad Dart		
<i>Platylesches ayresii</i>	Peppered Hopper	<i>Parinari curatellifolia</i>	
<i>P. robustus</i>	Robust Hopper		
<i>Zenonia zeno</i>	Orange-spotted Hopper		
<i>Pelopidas mathias</i>	Small Branded Swift		
<i>P. thrax inconspicua</i>	Whire-banded Swift	<i>Imperata cylindrica</i>	
<i>Borbo borbonica borbonica</i>	Olive Haired Swift		
<i>B. gemella</i>	Twin Swift		
<i>B. holtzii</i>	Variable Swift		
<i>Gegenes pumilio gambica</i>	Dark Hottentot		
<i>G. hottentota</i>	Common Hottentot		