

MATOBO CONSERVATION SOCIETY
CHECKLIST FOR THE HERPETOFAUNA OF THE MATOBO HILLS



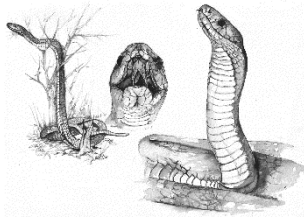
APPRECIATION

This material was prepared by the MATOBO CONSERVATION SOCIETY
 from chapter 12 of the book
“THE NATURAL HISTORY OF THE MATOBO HILLS” ISBN 978-0-7974-9815-0
 with the approval of the
 NATURAL HISTORY MUSEUM OF ZIMBABWE

The Matobo Conservation Society, a registered Welfare organisation, is committed to the conservation, appreciation and sustainable use of the natural and cultural resources within the Matobo Hills region. For more information (a) on this checklist and (b) the book “THE NATURAL HISTORY OF THE MATOBO HILLS”, write to: The Matobo Conservation Society, PO Box FM 648, Famona, Bulawayo or email matoboconservationsociety@gmail.com

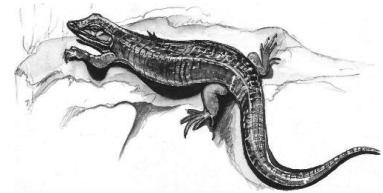
INTRODUCTION

Compiled by Dr Don Broadley
 Sketches were done by Jenny Whalley



The reptiles and amphibians together comprise the herpetofauna of the Matobo hills. It has a fairly rich species richness, consisting of 70 reptile and 28 amphibian species. Not only do these comprise a diverse assemblage, but they occur at very high densities compared to mammals. The herpetofauna of woodland and savanna areas of the Matobo includes many savanna species which are widely distributed across similar habitats of south-central Africa.

With a few exceptions, most amphibians are seasonally dependant on surface water and the aquatic habitats in which it is localised. The permanent water bodies have a few characteristic reptile inhabitants. The serrated hinged terrapin is found in such dams and permanent streams, and is replaced in temporary pans by the helmeted terrapin. The water monitor is most plentiful around permanent water bodies, where it feeds largely on crabs and mussels. During a drought, water monitors can switch to a diet of other invertebrates and a variety of vertebrate prey. Crocodiles are usually restricted to the larger dams.



Family	Scientific Name	Common Name	Your Notes
TESTIDUNES			
Pelomedusidae	<i>Pelomedusa subrufa</i>	Marsh Terrapin	
	<i>Pelusios sinuatus</i>	Serrated Hinged Terrapin	
Testudinidae	<i>Kinixys spekii</i>	Speke's Hinged Tortoise	
	<i>Stigmochelys pardalis</i>	Leopard Tortoise	
SQUAMATA			
Agamidae	<i>Acanthocercus atricollis</i>	Southern Tree Agama	
	<i>Agama kirkii</i>	Kirk's Rock Agama	
	<i>A. armata</i>	Peter's Ground Agama	
Chamaeleonidae	<i>Chamaeleo dilepis</i>	Common Flap-neck Chameleon	
Gekkonidae	<i>Afroedura transvaalica</i>	Zimbabwe Flat Gecko	
	<i>Chondrodactylus turneri</i>	Turner's Gecko	
	<i>Pachydactylus tigrinus</i>	Tiger Gecko	
	<i>P. punctatus</i>	Speckled Gecko	

MATOBO CONSERVATION SOCIETY
CHECKLIST FOR THE HERPETOFAUNA OF THE MATOBO HILLS

Family	Scientific Name	Common Name	Your Notes
	<i>Lygodactylus stevensoni</i>	Stevenson's Dwarf Gecko	
	<i>L. capensis capensis</i>	Common Dwarf Gecko	
	<i>Homopholis arnoldi</i>	Arnold's Velvet Gecko	
	<i>Hemidactylus tasmani</i>	Tasmanian Leaf-toed Gecko	
	<i>H. mabouia</i>	Common Tropical House Gecko	
Scincidae	<i>Trachylepis margaritifer</i>	Rainbow Skink	
	<i>T. varia</i>	Variable Skink	
	<i>T. striata</i>	Common Striped Skink	
	<i>Mochlus sundevallii</i>	Sundevall's Writhing-skink	
	<i>Panaspis maculicollis</i>	Spotted-neck Snake-eyed Skink	
	<i>Typhlacontias rohani</i>	Rohan's Blind Dart Skink	
	<i>Acontias occidentalis</i>	Savanna Legless Skink	
Lacertidae	<i>Nucras holubi</i>	Holub's Sandveld Lizard	
	<i>Meroles squamulosa</i>	Savanna Lizard	
	<i>Ichnotropis capensis</i>	Ornate Rough-scaled Lizard	
Cordylidae	<i>Cordylus jonesi</i>	Jones' Girdled Lizard	
	<i>Platysaurus intermedius rhodesianus</i>	Zimbabwe Flat Lizard	
Gerrhosauridae	<i>Gerrhosaurus nigrolineatus</i>	Black-lined Plated-lizard	
	<i>Matobosaurus validus</i>	Common Giant Plated Lizard	
	<i>G. flavigularis</i>	Yellow-throated Plated Lizard	
Varanidae	<i>Varanus albigularis</i>	Rock Monitor	
	<i>V. niloticus</i>	Water Leguaan	
Typhlopidae	<i>Rhinotyphlops lalandei</i>	Delalande's Beaked Blind Snake	
	<i>Afrotyphlops mucroso</i>	Zambezi Giant Blind Snake	
Leptotyphlopidae	<i>Leptotyphlops scutifrons</i>	Peter's Thread Snake	
Pythonidae	<i>Python natalensis</i>	Southern African Python	
Viperidae	<i>Causus rhombeatus</i>	Rhombic Night Adder	
	<i>C. defilippii</i>	Snouted Night Adder	
	<i>Bitis arietans</i>	Puff Adder	
Atractaspididae	<i>Atractaspis bibronii</i>	Bibron's Stiletto Snake	
	<i>Amblyodipsas polylepis</i>	Common Purple-glossed Snake	
	<i>Amblyodipsas ventrimaculatus</i>	Kalahari Purple-glossed Snake	
	<i>Aparallactus lunulatus</i>	Reticulated Centipede-eater	
	<i>A. capensis</i>	Cape Centipede-eater	
Elapidae	<i>Elapsoidea boulengeri</i>	Boulenger's Garter Snake	
	<i>Aspidelaps scutatus scutatus</i>	Common Shield Cobra	
	<i>Naja (Uraeus) annulifera</i>	Snouted Cobra	
	<i>N. (Afronaja) mossambica</i>	Mozambique Spitting Cobra	
	<i>Dendroaspis polylepsis</i>	Black Mamba	
Lamprophiidae	<i>Boaedon capensis</i>	Brown House Snake	
	<i>Gonionotophis capensis</i>	Cape File Snake	
	<i>Lycophidion capense capense</i>	Cape Wolf Snake	
Pseudaspiidae	<i>Pseudaspis cana</i>	Mole Snake	
Psammophiidae	<i>Psammophylax tritaeniatus</i>	Three-lined Grass-snake	
	<i>Psammophis subtaeniatus</i>	Western Stripe-bellied Sand-snake	
	<i>P. phillipsii</i>	Olive Grass Racer	
	<i>P. jallae</i>	Jalla's Sand Snake	
	<i>P. angolensis</i>	Dwarf Sand Snake	
Prosymnidae	<i>Prosymna bivittata</i>	Twin-striped Shovel-snout	
	<i>P. lineata</i>	Lined Shovel-snout	
	<i>P. stuhlmannii</i>	East African Shovel-snout	
Colubridae	<i>Philothamnus hoplogaster</i>	Southeastern Green Snake	
	<i>P. semivariegatus</i>	Variegated Bush Snake	
	<i>Crotaphopeltis hotamboeia</i>	White-lipped Herald Snake	
	<i>Telescopus semiannulatus</i>	Eastern Tiger Snake	
	<i>Dasyplectis scabra</i>	Eastern Rhombic Egg-eater	
	<i>Dispholidus typus</i>	Boomslang	
	<i>Thelotornis capensis</i>	Southern Vine Snake	
CROCODYLIA			
Crocodylidae	<i>Crocodylus niloticus</i>	Nile Crocodile	

MATOBO CONSERVATION SOCIETY
CHECKLIST FOR THE HERPETOFAUNA OF THE MATOBO HILLS

Family	Scientific Name	Common Name	Your Notes
AMPHIBIA			
Pipidae	<i>Xenopus laevis</i>	Africa Clawed Frog or Common Platanna	
Bufonidae	<i>Sclerophrys gutturalis</i>	Guttural Toad	
	<i>S. maculatus</i>	Flat-backed Toad	
	<i>S. garmani</i>	Garman's Toad	
	<i>Poyntonophrynus. fenoulheti</i>	Fenoulhet's Toad	
	<i>Schismaderma carens</i>	Red Toad	
Brevipectidae	<i>Breviceps adspersus</i>	Common Rain Frog	
Microhylidae	<i>Phrynomantis bifasciatus</i>	Red-banded Rubber Frog	
Arthroleptidae	<i>Leptopelis bocagii</i>	Bocage's Tree Frog	
Pyxicephalidae	<i>Pyxicephalus adspersus</i>	Giant Bullfrog	
	<i>Tomopterna cryptotis</i>	Cryptic Sand Frog	
	<i>T. marmorata</i>	Marbled Sand Frog	
	<i>T. tuberculosa</i>	Rough Sand Frog	
	<i>Amieta angolensis</i>	Angola River Frog	
	<i>Strongylopus fasciatus</i>	Striped Stream Frog	
	<i>Cacosternum boettgeri</i>	Boettger's Dainty Frog	
Ptychadenidae	<i>Ptychadena anchietae</i>	Anchieta's Ridged Frog	
	<i>P. porosissima</i>	Grassland Ridged Frog	
	<i>P. uzungwensis</i>	Uzungwe Grass-frog	
Phrynobatrachidae	<i>Phrynobatrachus natalensis</i>	Natal Puddle Frog	
	<i>P. mababiensis</i>	Mababe Puddle Frog	
Hyperoliidae	<i>Hyperolius nasutus</i>	Long Reed Frog	
	<i>H. benguellensis</i>	Bocage's Sharp-snouted Reed frog	
	<i>H. marmoratus</i>	Painted Reed Frog	
	<i>Kassina senegalensis</i>	Bubbling Kassina	
Hemisotidae	<i>Hemisis marmoratus</i>	Mottled Shovel-nosed Frog	
	<i>H. guineensis</i>	Guinea Shovel-snouted frog	
Rhacophoridae	<i>Chiromantis xerampelina</i>	Gray Tree Frog	